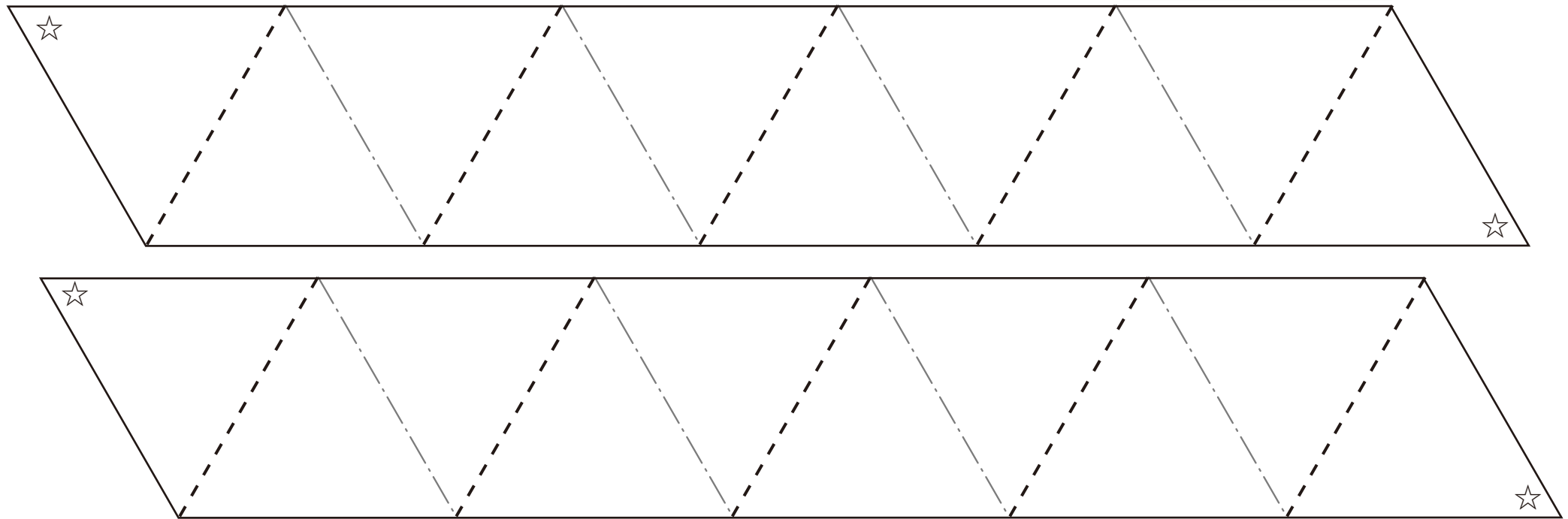
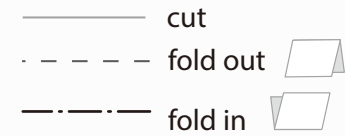


# 6-sided Origami Puzzle

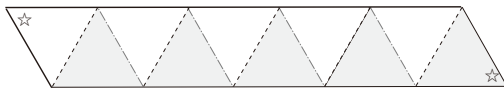
— White —

The size of white type is half, because the back side is also used.  
After completing the hexagonal puzzle, let's draw a picture on each side.

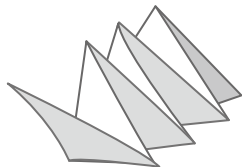


## How to make

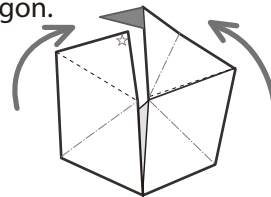
1. Cut out the shape.



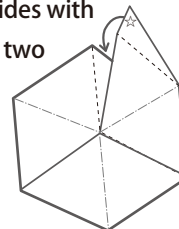
2. Fold along the lines, out, in, out....  
Fold like an accordion, and make a triangle.



3. Fold along the lines,  
make a hexagon.

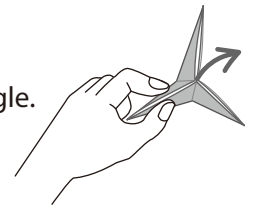


4. Glue the 2 back sides with  
☆ mark, stick the two  
sides together.



## How to play

Make the hexagon into a standing triangle.  
It can now be opened from the middle,  
revealing the next side.



● Let's draw a picture on each  
of three sides!

